



DELTA

Take a look at our extensive range of
HOLIDAY HOMES FOR 2026



The perfect holiday
home from home





DELTA

Welcome

to the 2026 range of Delta Holiday Homes

Our philosophy at Delta is to give our customers what they want, when they want it, at an affordable price.

We have added some new additions to the range for 2026, The Belgravia Lodge and Belgravia, two new units built to BS3632 fully residential spec designed in partnership with Sally Ann McCoy of Edwards McCoy. The units both have a beautiful fresh look with a light neutral country style interior they certainly add a touch of class to the Delta range.

The Athena lodge was new for 2025 season, with its studio apartment feel and a stunning modern exterior look the Athena Lodge continues to be a popular model within the range.

The Asmara and the Arabella, they both give a very light and airy feel to the lounge and kitchen area you feel like you're sitting at home with no compromising on space, and all at amazing value for money.

The Avalon range gives value for money across a full range of ten-foot and twelve-foot layouts we are sure there will be a layout to suit most requirements, we have introduced an alternate upholstery option to give a second softer look to the Avalon.

The Saffron deluxe is a new very affordable unit with a clean modern feel, free standing furniture and integrated fridge freezer and microwave makes this unit real value for money.

The Superior and the Superior deluxe are still a very popular model within the Delta range now with a more updated modern feel with a touch of luxury with many extras all built into an affordable price. The Superior and Superior deluxe show that a design can work year after year and with their new look they are even more in with the modern day needs from a luxury Holiday home.

The "Countryside Deluxe" being a modern styled holiday home with great use of space and light to give a comfortable homely feel. With a country style range oven and fully equipped with a variety of appliances, this truly is a touch of genius in holiday home design. If you're looking for comfort levels at the highest standards.

The whole Delta range for 2026 has been created for customers to enjoy quality at an affordable price and give Delta Caravans a range to be proud of.



Contents

Belgravia Lodge

4



Belgravia

6



Countryside Deluxe

8



Superior Deluxe

10



Superior

12



Athena Lodge

14



Danbury

16



Asmara

18



Langford

20



Arabella

22



Woodbury

24



Avalon

26



Saffron Deluxe

28



Santana

30



Belgravia Lodge



The Belgravia Lodge is a touch of luxury, working with Sally Ann McCoy of "Edwards McCoy" we have created something exceptional setting a new benchmark in stylish, high quality fully residential Lodges.

The Belgravia Lodge has a mono pitch roof design which creates a great feeling of extra space and adds a new innovative modern look to impress any new homeowner.

This luxury home features large glass windows to optimise your panoramic views. The Belgravia is designed to optimise space to give as much storage as possible. The use of modern lighting and styling create a luxury feel that is guaranteed to make you feel special.

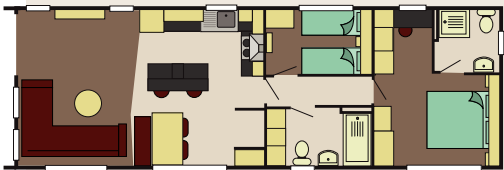
Fully equipped with many integrated appliances and an American fridge freezer the Belgravia leaves you wanting for nothing. The shower room has a large domestic shower and lots of space, the spacious main bedroom also features its very own shower room and an extensive range of wardrobes. The Belgravia is a welcome addition to the Delta range for the 2026 season.





STANDARD FEATURES

- Built to full residential specification (BS3632)
- UPVC double glazed windows and doors
- Gas combi central heating system
- Steel pan tile roof
- Lagged pipes
- Feature outside lighting
- Feature mediaTV area with HDMI connection points
- Free standing I shape suite
- Dining table with fixed storage bench and 2 chairs
- American style fridge freezer
- Integrated dishwasher
- Integrated washer dryer
- Inbuilt microwave
- Draw divan beds in all rooms
- Thermostatic shower mixers
- Fully galvanised chassis



42x14'6 2 bed



Belgravia



The Belgravia is a touch of luxury, working with Sally Ann McCoy of "Edwards McCoy" we have created something exceptional setting a new benchmark in stylish, high quality fully residential Lodges.

This luxury home features large glass windows to optimise your panoramic views. The Belgravia is designed to optimise space to give as much storage as possible. The use of modern lighting and styling create a luxury feel that is guaranteed to make you feel special.

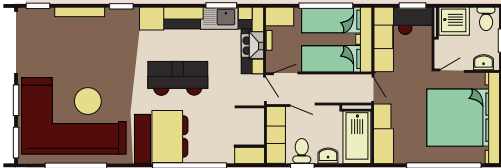
Fully equipped with many integrated appliances and an American fridge freezer the Belgravia leaves you wanting for nothing. The shower room has a large domestic shower and lots of space, the spacious main bedroom also features its very own shower room and an extensive range of wardrobes. The Belgravia is a welcome addition to the Delta range for the 2026 season.





STANDARD FEATURES

- Built to full residential specification (BS3632)
- UPVC double glazed windows and doors
- Gas combi central heating system
- Steel pan tile roof
- Lagged pipes
- Feature outside lighting
- Feature media TV area with HDMI connection points
- Free standing I shape suite
- Dining table with fixed storage bench and 2 chairs
- American style fridge freezer
- Integrated dishwasher
- Integrated washer dryer
- Inbuilt microwave
- Draw divan beds in all rooms
- Thermostatic shower mixers
- Fully galvanised chassis



42x14'6 2 bed



Countryside Deluxe



The Countryside Deluxe is a touch of luxury with many features including a double opening patio door with a full glass front which gives you easy access to your front decking and full frontal panoramic views. This holiday home is genius in its design with optimised space and use of lighting to create a luxury feel that is guaranteed to make you feel special. Fully equipped with many integrated appliances and an American style fridge freezer the Countryside Deluxe leaves you wanting for nothing. The bathroom has a full size bath with a shower. The spacious main bedroom also features its very own shower room and a walk in wardrobe. If you require spoiling with your new holiday home the Countryside Deluxe is the home to view.



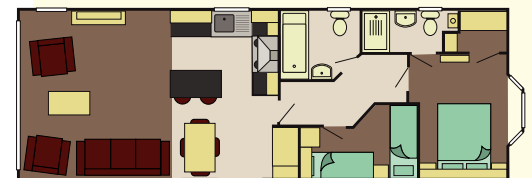


STANDARD FEATURES

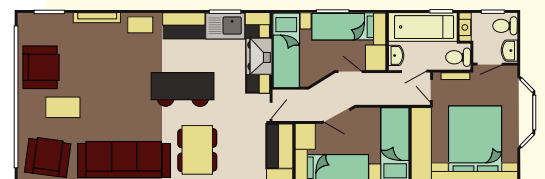
- UPVC double glazed windows and door/s
- Gas combi central heating system
- Steel pantile roof
- PVC cladding to the exterior
- Lagged pipes
- Exterior light
- Feature fireplace with TV points and HDMI connections
- Dining table & chairs
- Gas/electric range oven
- Stainless steel cooker hood
- Integrated dishwasher
- Integrated washer dryer
- Inbuilt microwave
- American style fridge freezer
- Inbuilt wine cooler
- Bluetooth inbuilt speakers in the lounge
- Domestic interior doors
- Gas ram bed with under bed storage to main bedroom
- Foldout bed to lounge seating
- Vaulted ceiling throughout
- Thermostatic shower mixer

OPTIONAL FEATURES

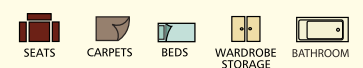
- Fully galvanised chassis



40 x 14 2 Bed



41 x 14 3 Bed



Superior Deluxe



The Superior Deluxe features a double opening patio door with a full glass front which gives you easy access to your front decking and full frontal panoramic views. This holiday home is genius in its design with optimised space and use of lighting to create a luxury feel that is guaranteed to make you feel special. Fully equipped with many integrated appliances and an American style fridge freezer the Superior Deluxe leaves you wanting for nothing. The bathroom has a full size bath with a shower. The spacious main bedroom also features its very own shower room and a walk in wardrobe.

If you require spoiling with your new holiday home the Superior Deluxe is the home to view.



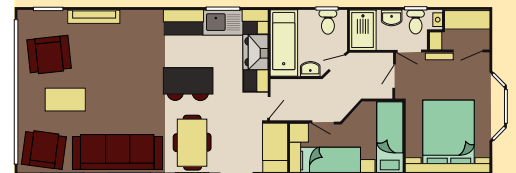


STANDARD FEATURES

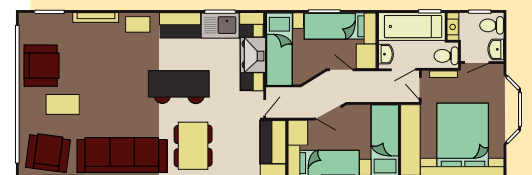
- UPVC double glazed windows and door/s
- Gas combi central heating system
- Steel pantile roof
- PVC cladding to the exterior
- Lagged pipes
- Exterior light
- Feature fireplace with tv points and HDMI connections
- Dining table & chairs
- Gas/electric range oven
- Stainless steel cooker hood
- Integrated dishwasher
- Integrated washer dryer
- Inbuilt microwave
- American style fridge freezer
- Inbuilt wine cooler
- Bluetooth inbuilt speakers in the lounge
- Domestic interior doors
- Gas ram bed with under bed storage to main bedroom
- Foldout bed to lounge seating
- Vaulted ceiling throughout
- Thermostatic shower mixer

OPTIONAL FEATURES

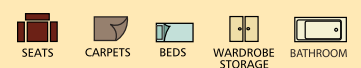
- Fully galvanised chassis



40 x 14 2 Bed



41 x 14 3 Bed



Superior



The Superior features a double sliding patio door within a full glass front which gives you direct access to your own deck. The living room is wonderfully inviting, with comfortable seating incorporating a fold out occasional bed and co-ordinated scatter cushions. The bedrooms, include plush headboards and co-ordinated curtains. The modern stylish kitchen has high gloss doors with under unit lighting with many integrated appliances and an American style fridge freezer.

The Superior has a light and spacious bathroom with a shower above the bath plus a second shower room featuring a large shower enclosure; both include mirrored cabinets and dual flush toilets.

If you are after a holiday home that has everything the Superior is holiday home to view.



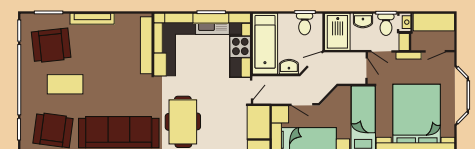


STANDARD FEATURES

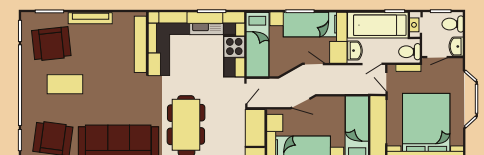
- UPVC double glazed windows and door/s
- Gas combi central heating system
- Steel pantile roof
- PVC cladding to the exterior
- Lagged pipes
- Exterior light
- Feature fireplace with tv points and twin HDMI connections
- Dining table & chairs
- Gas oven & hob
- Stainless steel cooker hood
- Integrated dishwasher
- Integrated washer dryer
- Inbuilt microwave
- American style fridge freezer
- Domestic interior doors
- Gas ram bed with under bed storage to main bedroom
- Foldout bed to lounge seating
- Vaulted ceiling throughout
- Thermostatic shower mixer

OPTIONAL FEATURES

- Fully galvanised chassis



40 x 13 2 Bed



41 x 14 3 Bed



41 x 14 2 Bed CL



Athena Lodge



The Athena Lodge is a modern and stylish unit featuring large glass front windows and side French doors which gives the best opportunity to enjoy your surrounding with excellent panoramic views. The Athena has optimised the design using the storage space to the max and bringing in a modern studio apartment feel .

The luxury you need to make your holiday home feel like a home is included and with addition of all the extra appliances inbuilt, washer dryer, dishwasher, 70/30 fridge freezer. The Athena has master bedroom has a huge amount of wardrobe space. The twin includes full size three foot beds and ample storage space giving a comfortable adult guest room. Any viewers to this unit will not be disappointed by the quality and style for an affordable price.



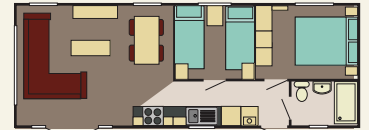


STANDARD FEATURES

- UPVC double glazed windows and door/s
- Gas combi central heating system
- Steel pantile roof
- PVC cladding to the exterior
- Lagged pipes
- Exterior feature spot light
- Dining table & chairs
- Gas oven
- Black modern cooker hood
- Integrated dishwasher
- Integrated washer dryer
- 70/30 integrated fridge freezer
- Domestic interior doors
- Thermostatic shower mixer

OPTIONAL FEATURES

- Fully galvanised chassis



36 x 13 2 Bed



38 x 13 2 Bed



40 x 13 2 Bed

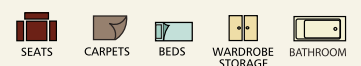


42 x 13 6" 3 Bed



42 x 13 6" 2 Bed CL

Centre lounge model is a model with upgrades as standard, please enquire for more information.



Danbury



The Danbury has a large spacious living area. The open plan layout provides a feeling of space and comfort. The dinette and kitchen area are equally as spacious. Well fitted bedrooms and large fabric headboards add to the look and feel of comfort. The modern styling and rich colours give the Danbury the feeling of luxury.





STANDARD FEATURES

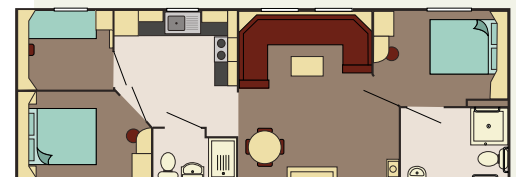
- Spacious living area
- Light and airy feel
- Feature fireplace
- Steel pantile roof
- Upvc double glazed throughout
- Gas combi central heating
- Vaulted ceiling throughout
- Mirror to the lounge area
- Exterior light
- Domestic interior doors
- Large comfortable seating lounge
- Fold out bed for extra sleeping accommodation
- LED lighting throughout

OPTIONAL FEATURES

- Fully galvanised chassis
- Front window option



40 x 14 2 Bed CL Wheelchair Accessible



40 x 14 3 Bed CL Wheelchair Accessible

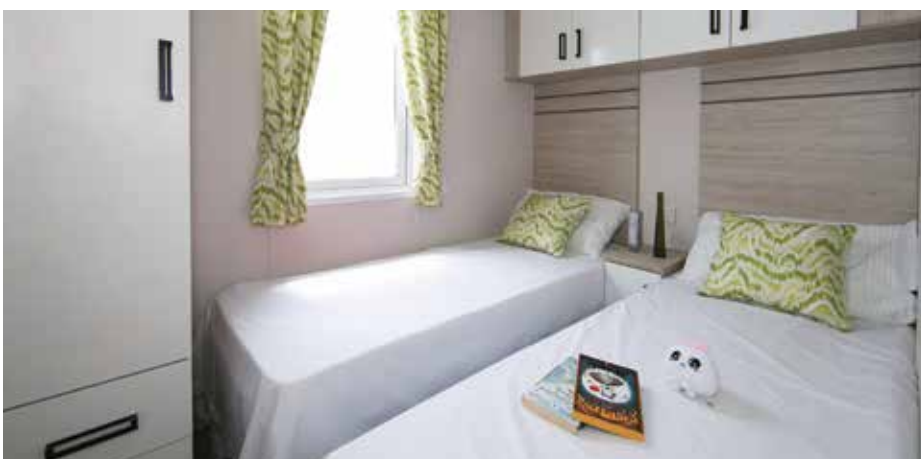


Asmara



The Asmara Range has panoramic front windows allowing natural light to flow into the open plan interior. The light and airy lounge and dining area has L-shaped seating, free standing sofa and table and chairs, giving ample space to entertain family and friends. The natural colour scheme is finished with vertical blinds. The well-appointed kitchen features a high-level oven and grill and separate hob. The midnight marble worktop is complimented by the black sink, tap and accessories. Also included as standard are an integrated fridge/freezer and microwave. The bathroom has a large shower and feature vanity unit with a modern countertop sink and generous storage space. The bright, fresh bedrooms are both comfortable and practical with ample storage space.





STANDARD FEATURES

- UPVC double glazed windows and doors
- Gas combi central heating
- Steel pantile roof
- PVC cladding
- Vertical blinds to lounge area
- Dining table and chairs
- Integrated fridge/freezer
- Integrated microwave
- High level gas oven & grill
- Separate hob
- Black cooker hood
- Domestic interior doors
- Fold out bed to lounge seating
- Thermostatic shower mixer

OPTIONAL FEATURES

- Fully galvanised chassis



36 x 12 2 Bed



41 x 12 3 Bed



Langford



The Langford is nothing less than a home from home, designed to give you the feeling of space with a modern feel. The Langford has many great features as standard including a full size bath with a shower above, 70/30 fridge freezer and a large u-shaped kitchen with an option to add a washer dryer or dishwasher if required. The main bedroom is spacious with plenty of wardrobe and drawer space to fit in all those extra holiday clothes. The Langford is a holiday home that won't disappoint you for value without sacrificing quality and style.





STANDARD FEATURES

- UPVC double glazed windows and door/s
- Gas combi central heating
- Steel pantile roof
- PVC cladding
- Lagged pipes
- Exterior light
- Feature fireplace
- Dining table and chairs
- Gas oven & hob
- Stainless steel cooker hood
- Built in 70/30 fridge freezer
- Domestic interior doors
- Foldout bed to lounge seating
- Vaulted ceiling throughout
- Thermostatic shower mixer

OPTIONAL FEATURES

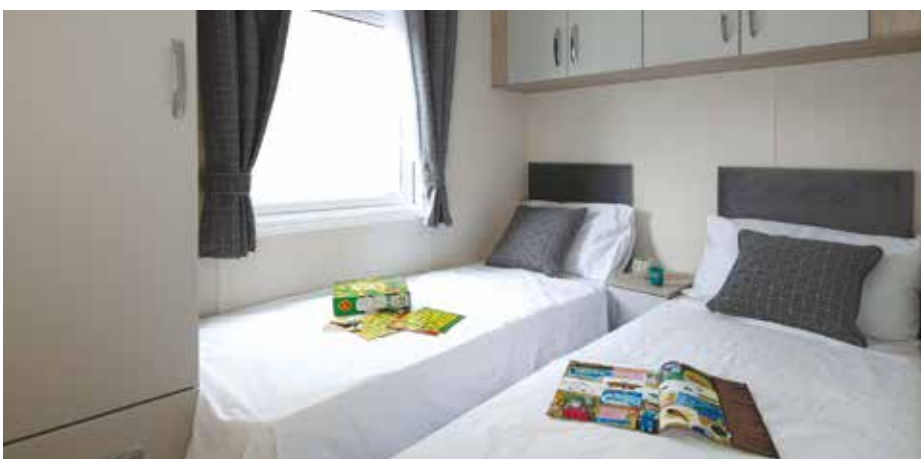
- Fully galvanised chassis



40 x 13 2 Bed



41 x 13 3 Bed



Arabella



The open plan layout gives this range a feeling of space with a bright and airy colour scheme. The lounge has a feature fireplace and a spacious dining area perfect for entertaining family and friends. The well-equipped kitchen has generous storage space and includes an integrated microwave and 70/30 fridge/freezer. The modern bathroom has a large shower and a striking countertop basin. The main bedroom is spacious and stylishly appointed with a 5ft wide double bed.





STANDARD FEATURES

- UPVC double glazed windows and doors
- Gas combi central heating
- Steel pantile roof
- PVC cladding
- Dining table and chairs
- Integrated fridge/freezer
- Integrated microwave
- Gas oven & hob
- Black cooker hood
- Domestic interior doors
- Fold out bed to lounge seating
- Thermostatic shower mixer
- Countertop wash hand basin

OPTIONAL FEATURES

- Fully galvanised chassis



36 x 12 2 Bed



36 x 12 3 Bed



Woodbury



The Woodbury has large front windows making for a bright and fresh lounge. The L-shaped seating ensures there's plenty of room for everyone to sit back and relax. The kitchen is on trend with bold dark grey doors and matching appliances including an integrated fridge/freezer and microwave. The bathroom continues the modern styling with black basin taps and accessories. The holiday home is completed by comfortable bedrooms in relaxing tones of grey with the master bedroom having a useful dressing table and stool and convenient ensuite WC. This holiday home has been designed to have everything you need to make the most of your leisure time.



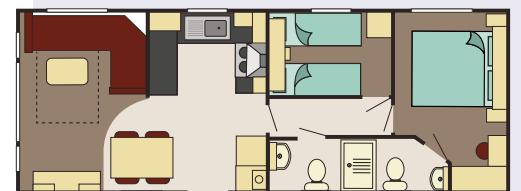


STANDARD FEATURES

- UPVC double glazed windows and doors
- Gas combi central heating
- Steel pantile roof
- PVC cladding
- Dining table and chairs
- Integrated fridge/freezer
- Interated microwave
- Gas oven & hob
- Black cooker hood
- Domestic interior doors
- Fold out bed to lounge seating
- Thermostatic shower mixer
- Countertop wash hand basin

OPTIONAL FEATURES

- Fully galvanised chassis



32 x 12 2 Bed



Avalon



The Avalon is an ideal holiday home for those looking for excellent value for money but who do not want to compromise on comfort or styling. Modern natural colours give a fresh look, whilst spacious lounge seating, a well laid out dining area and plenty of storage are but some of the practical ideas included in this model.





STANDARD FEATURES

- UPVC double glazed windows and doors
- Gas combi central heating
- Steel pantile roof
- PVC cladding
- Dining table and chairs
- Integrated fridge/freezer
- Integrated microwave
- Gas oven & hob
- Black cooker hood
- Domestic interior doors
- Fold out bed to lounge seating
- Thermostatic shower mixer
- Countertop wash hand basin

OPTIONAL FEATURES

- Fully galvanised chassis
- Also available with a grey upholstery option



Saffron Deluxe



With front French doors, the Saffron Deluxe offers modern, open plan design, ideal for spending quality time with family and friends. Free standing sofas and dining table and chairs along with a well-equipped kitchen, including integrated appliances, continue the modern styling. This thoughtfully designed holiday home provides exceptional value for money, guaranteed to exceed expectations.





STANDARD FEATURES

- Front opening french doors
- UPVC double glazed windows and doors
- Gas combi central heating
- Steel pantile roof
- PVC cladding
- Exterior light
- Feature fireplace
- Dining table and chairs
- Gas oven and hob
- Integrated 70/30 fridge/freezer
- Integrated microwave
- Free standing sofas
- Pull out bed to lounge seating
- Thermostatic shower mixer

OPTIONAL FEATURES

- Fully galvanised chassis



36 x 12 2 Bed



37 x 12 3 Bed



Santana



The Santana has bright modern attractive fabrics with comfort and design producing the perfect family holiday home. This is the ideal model for first time holiday home buyers who are looking for outstanding value for money alongside spacious practical open plan living.





STANDARD FEATURES

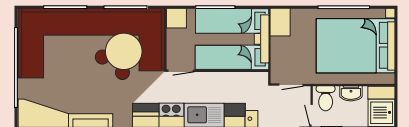
- Double glazed windows and door/s
- Vaulted ceiling throughout
- Lagged pipes
- Electric fire
- Wrap around spacious lounge seating
- Dinette seating area
- Gas cooker with grill
- Space for microwave
- Space for fridge/ freezer
- Ample bedroom storage
- Modern shower room
- Thermostatic shower mixer
- Fold out bed to lounge seating
- Steel pantile pitched roof
- Gas central heating or electric panel heaters

OPTIONAL FEATURES

- Fully galvanised chassis



28 x 10 2 Bed



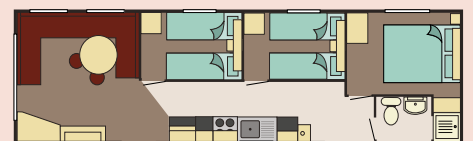
30 x 10 2 Bed



32 x 10 2 Bed



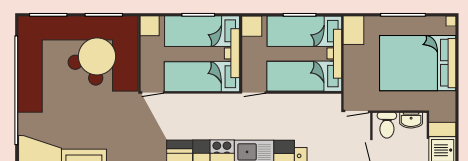
35 x 10 2 Bed



35 x 10 3 Bed



35 x 12 2 Bed



35 x 12 3 Bed



Quality caravans for all seasons



When buying a caravan from Delta you can be confident in the knowledge that it has been designed by talented designers at the forefront of their industry and built by time served craftsmen using state of the art equipment and the highest quality materials. Delta Caravans are built with pride, skill and innovation, they are made to last and truly are caravans for all seasons.

Dealer



DELTA CARAVANS International Ltd.,
240 Leads Road, Hull, East Riding of Yorkshire, HU7 0DF
Tel: (01482) 788088 Fax: (01482) 788090
Email: info@deltacaravans.co.uk
www.deltacaravans.co.uk



Whilst all the information contained in this leaflet is correct at the time of printing, it may be that because of the use of alternative materials or the shortage of supplies, alterations may have to be made to the models in this leaflet. Particulars of any changes may be obtained from your caravan dealer. All colours have been matched as close as printing techniques allow, slight variations may occur when compared to the actual fabrics.

Televisions, videos and other props are purely for display purposes only and not included with the caravan.